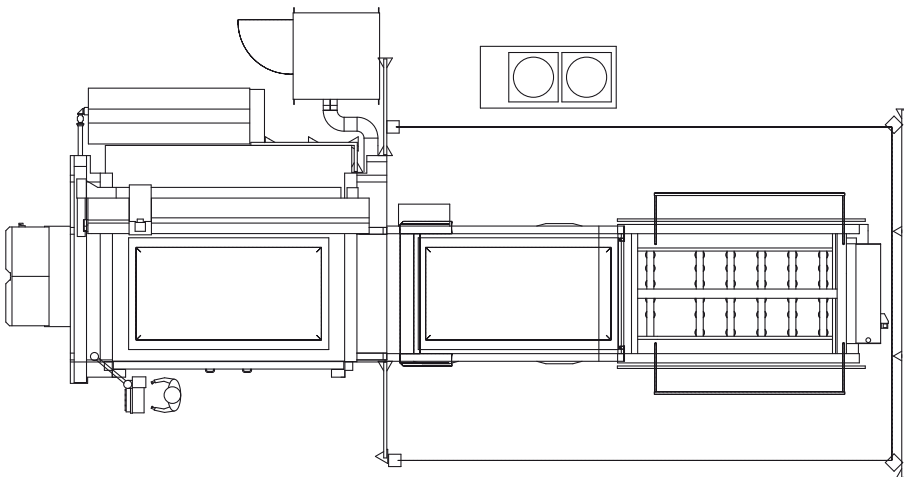
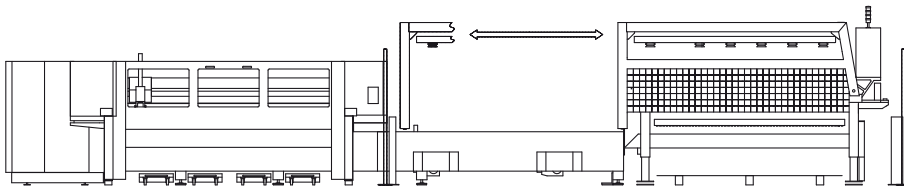


Technical Data

ByTrans

ByTrans Extended

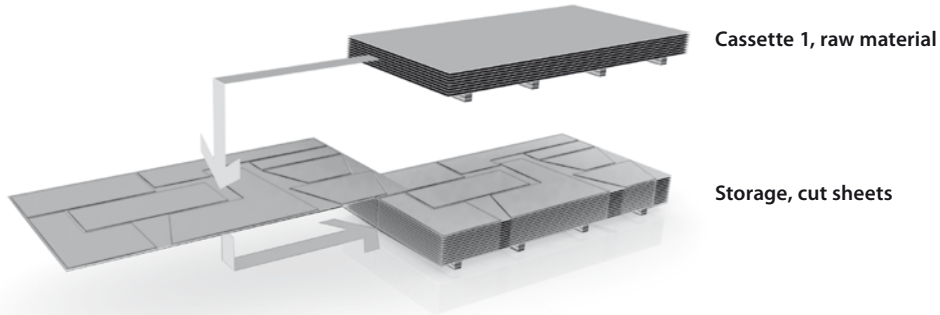


Dimensions according to assembly plan

ByTrans and ByTrans Extended Application Variants

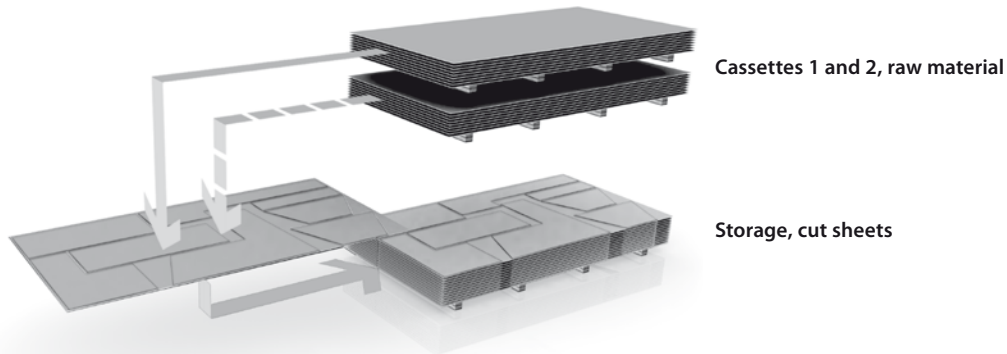
■ ByTrans 3015

One cassette for raw material

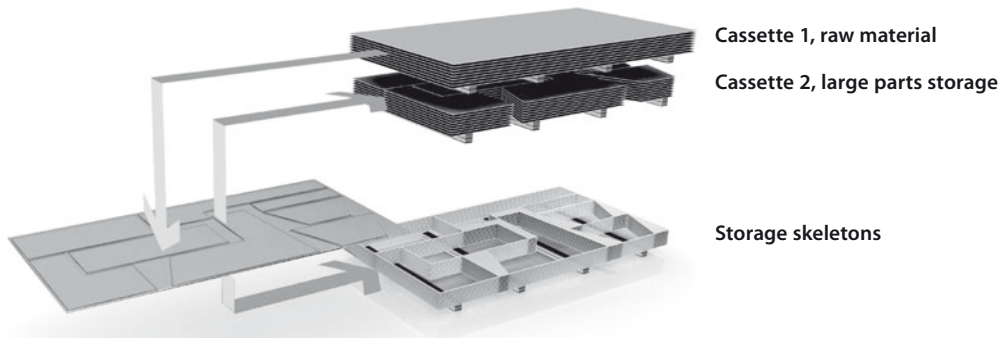


■ ByTrans 3015 Extended

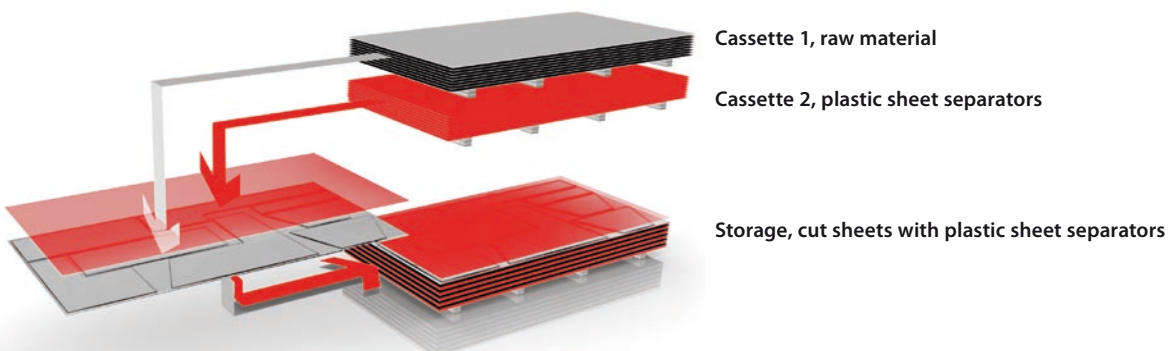
Two cassettes for raw material



Large parts and sheet skeletons separated



Cut sheets with plastic sheet separators



Loading/unloading module	ByTrans 3015	ByTrans 3015 Extended
Sheet metal nominal dimensions	3000 × 1500 mm	3000 × 1500 mm
Maximum sheet metal size	3048 × 1524 mm 120 × 60 in.	3048 × 1524 mm 120 × 60 in.
Sheet sizes	3000 × 1500 mm 2500 × 1250 mm 2000 × 1000 mm	variable
Number of cassettes	1	2
Sheet metal thickness (loading and unloading)	0.8 to 25 mm	0.8 to 25 mm
Maximum sheet metal weight	890 kg	890 kg
Raw material, stacking height (incl. pallet)	max. 240 mm	max. 240 mm
Raw material, stacking weight	max. 3000 kg	max. 3000 kg
Cut sheets, stacking height (incl. pallet)	max. 350 mm	max. 350 mm
Cut sheets, stacking weight	max. 3000 kg	max. 3000 kg
Materials	mild steel stainless steel aluminum	mild steel stainless steel aluminum
Loaded	using fork-lift truck or workshop crane	
Unloaded	using fork-lift truck	
Standard cycle time*	60 s	60 s
Cycle time with large part removal*		140 s
Cycle time with insertion of protective material**		90 s
Operation	via touchscreen of the operating terminal of the laser cutting system	
Module weight (net)	4500 kg	5000 kg
Maximum electric power consumption (supplied via cabinet of the laser cutting system)	6.0 kW	6.0 kW
Compressed air consumption	max. 10 m ³ /h	max. 10 m ³ /h

* without table change machine

** with usual cutting plan

Machine configurations

ByTrans 3015/ByTrans 3015 Extended fits the BySpeed Pro 3015, BySprint Pro 3015, BySprint 3015, Bystar 3015, as well as the BySprint Fiber 3015, each with ByVision CNC.

Bystronic Best choice.

Laser | Bending | Waterjet
bystronic.com